



Global Integra Trade
QUALITY VALUE CONFIDENCE

Company

Profile

Empowering Industries
Through Reliable Engineering
Solutions



www.globalintegratrade.com | info@globalintegratrade.com

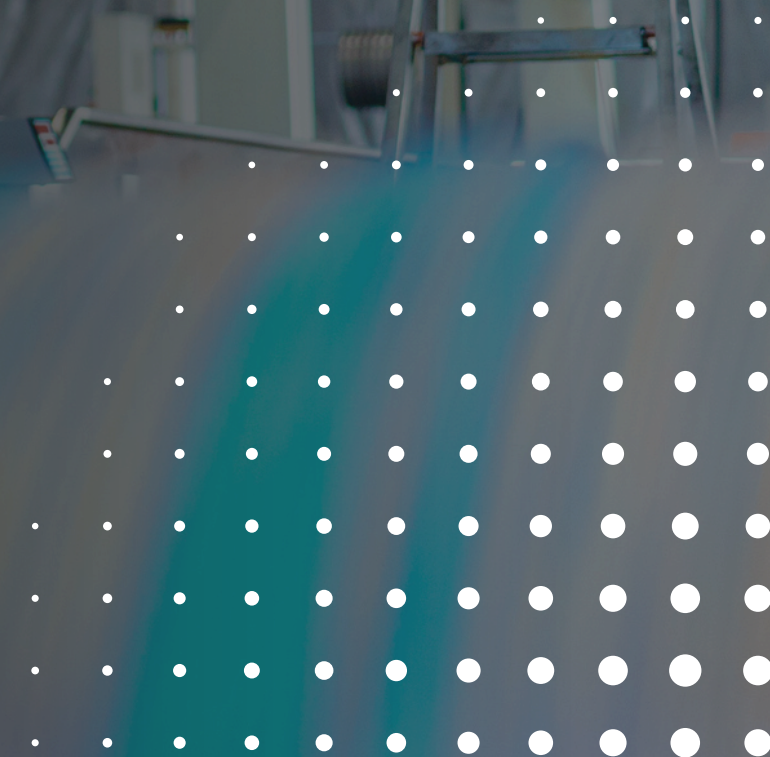


1. About Us:

Global Integra Trade (GIT) is a specialized company in importing and trading industrial equipment and spare parts for all types of factories.

The company was established to serve as a **trusted bridge between global markets and industrial facilities across the Arab region, providing integrated industrial solutions** built on quality, precision, and commitment to deadlines.

Through our offices in the **United States and the United Arab Emirates, we ensure our clients have access to the best global brands and suppliers, with the capability to deliver genuine equipment and spare parts efficiently and competitively.**



2. Our Company Vision & Mission



Our Vision

To be the **leading industrial partner in the Arab region** in terms of quality and reliability—empowering factories to achieve higher operational efficiency through advanced technologies and innovative equipment.



Our Mission

To deliver **high-quality industrial products** sourced from **trusted global manufacturers**, while providing **fast, precise, and reliable services** built on **mutual trust** with our clients.

3. Core Values

Quality

We are committed to offering genuine products that meet global standards

Value

We ensure the best balance between performance and cost.

Confidence

We believe that trust is the foundation of every successful relationship with our clients and partners.



4. What Makes GIT Different

At GIT, we don't just supply equipment—we deliver **end-to-end engineering value**.

Our edge lies in combining **international expertise** with **local market knowledge**, ensuring every client benefits from:

Global Reach: Offices across Egypt, UAE, and the USA with partnerships spanning Europe and Asia.

Diverse Portfolio: Thousands of SKUs from over 50 global brands, covering automation, power, HVAC, and process equipment.

Certified Quality: All products sourced directly from authorized manufacturers.

Responsive Support: Our dedicated team provides technical consultation, logistics coordination, and after-sales service around the clock.

5. Products & Solutions



Automation & Control Systems

Advanced process automation from Siemens, ABB, Schneider Electric, IFM, Omron, Pepperl+Fuchs, SICK, Pilz, Turck, and Phoenix Contact.



Instrumentation & Analytics

Precision sensors and process instruments from Endress+Hauser, Krohne, WIKA, JUMO, Emerson, and Vega.



Hydraulics & Pneumatics

Industrial fluid systems by Festo, Rexroth, Parker, SMC, Bürkert, and Numatics.



Heating & Combustion

Thermal management and combustion control by Fireye, Bosch, Vaillant, Emerson, and McDonnell & Miller.



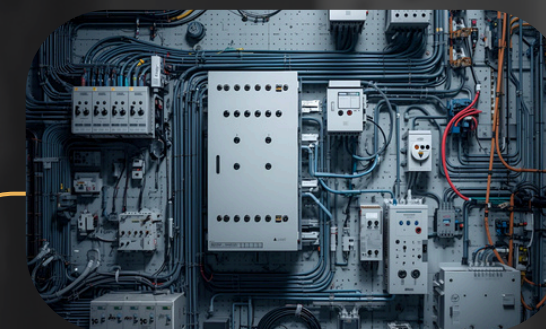
Weighing & Batching Systems

Industrial weighing solutions from Mettler Toledo, Ohaus, Avery, and Rice Lake.



HVAC & Chillers

Energy-efficient climate control by Carrier, Trane, Daikin, York, LG, and Samsung.



Power & Electrical Solutions

Comprehensive power systems from Legrand, Rittal, ABB, Siemens, and Schneider Electric.



Filtration & Process Equipment

Advanced process filtration from Pall, Cobetter, and Parker.

6. Key Partners

GIT collaborates with some of the most respected names in engineering and manufacturing worldwide. Through these partnerships, we ensure our clients receive genuine, certified products and technically sound solutions that meet international standards. Trusted by more than 25 leading industrial and pharmaceutical names, including:



7. Achievements



Expanded operations to
three international offices



Egypt



USA



UAE



Authorized distributor for
major global brands



Recognized for excellence in
engineering supply chain
management



Committed to continuous
improvement and quality
assurance

8. Global Footprint



Egypt Office: 16 Tout Ankh Amoun, Alexandria, Egypt

☎ | +20 3 4214446



UAE Office: Office 2705, Concord Tower, Dubai Media City, Dubai, UAE

☎ | +971 56 741 1177



USA Office: 3318 HWY 365, Suite 291, Nederland, TX 77627

☎ | +1 979 661 6041

9. Corporate Social Responsibility (CSR)



At GIT, we believe responsible business practices are the foundation of long-term success. We operate with integrity, transparency, and respect for our clients, employees, and communities.

- Our commitment to sustainability is based on clear actions:
 - **Protecting Resources:** We promote energy-efficient solutions (like advanced automation systems) to help clients reduce consumption, and we optimize our logistics to minimize our environmental footprint.
 - **Ethical Sourcing:** We only supply genuine, high-quality spare parts sourced from partners who meet strict international ethical and labor standards.
 - **Workforce Investment:** We ensure a safe and inclusive working environment across all our offices and invest in continuous technical training to maintain a world-class, highly skilled team.



10. **Summary**

Global Integra Trade (GIT) is not just a supplier—it is a global partner in operational excellence, combining world-class products, engineering expertise, and customer-focused service to help clients achieve efficiency, sustainability, and growth.



Contact

Get in Touch
With Us

info@globalintegratrade.com 

www.globalintegratrade.com 